

• **Expert in Farrowing Solutions**
- **Get the Best**



Pig-LET Water- and Feed solution

**Pig-LET Starter saves 40-50 %
of the weakest piglets**

About us

Best Farm is a new agrocompany that puts focus on the farrowing pen. Our mission is to reduce mortality among piglets through innovative solutions, which optimize the conditions in the farrowing pen.

Best Farm is founded by Lars Brunse and is part of The IBF Group, which includes the companies Polysan and SundsAlfa, both operating in the field of agriculture. Best Farm offers a 360-degree solution with focus on improving the environment in the farrowing pen, which can ensure lower mortality and improve the productivity.

In addition, we want to secure the farrowing path with group-house sows in the future - of course without compromising the animal welfare.

Contact us today - for more information



Lars Brunse
External sales

+45 44 18 22 44
lbr@bestfarm.dk



Vicki H. Raahede
Internal sales

+45 41 90 28 95
vhr@bestfarm.dk



Content

Pig-LET Program



Pig-LET Starter p. 7



Pig-LET 2-in-1 p. 10



Pig-LET All-in-1 p. 11



Pig-LET MultiCup p. 12



Pig-LET MultiCup with dropmix p. 14



SS Drinker p. 18



Roundfeeder p. 18

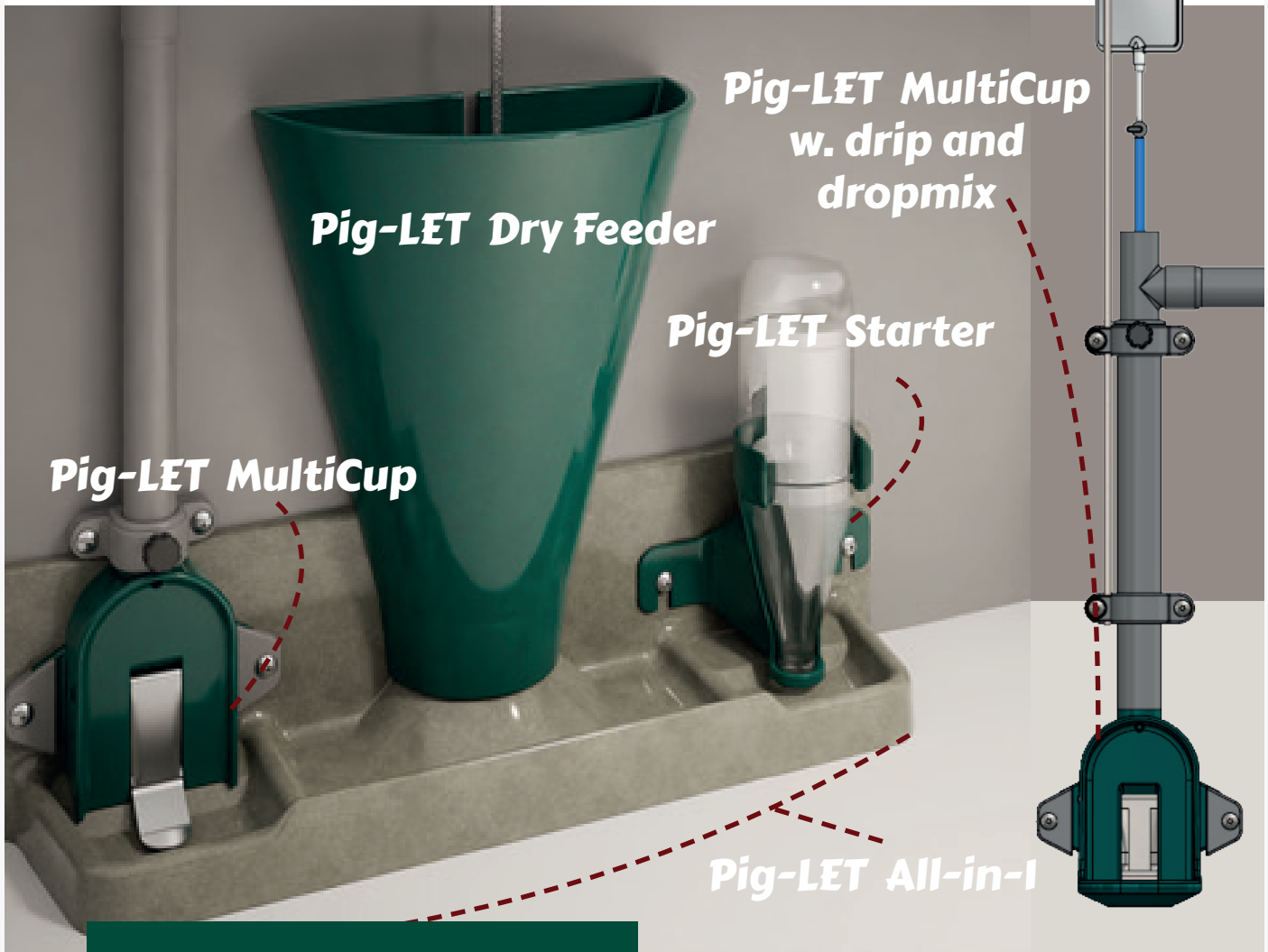


Dry Feeder 5 L p. 19



Dry Feeder 0.9 L p. 19

Patented Pig-LET program



The Pig-LET program has a simple purpose: To reduce piglet mortality by giving the weakest piglets the necessary nourishment right from the start. As part of the program, we present the **Pig-LET Starter** and **Pig-LET MultiCup**. Two world news that allow the weakest piglets to survive.



- **Patented system which gives the weakest piglets a good start**
- **Consists of several units that can be ordered together or separately**
- **Tested at Danish pig producers with good results**

The Pig-LET program is tested with great results

“As a Management Advisor in the farrowing pen, it has always been a known challenge to get enough nutrition and fluids in piglets. The combination of Pig-LET Starter and YoghurLac® milk has simply solved the challenge and provides a huge help in everyday life.”

Karina Mikkelsen, Farestalds Eliten



“We have tested the Pig-LET Starter and can state that we have reduced the piglet mortality by approx. 50% for the weak born under 800 g. We can only recommend everyone to use the Pig-LET Starter.”



Torben Hauskov runs Havskov Griseproduktion with 4,900 sows spread over several farms around Lemvig. Havskov produces approx. 40 piglets per year sow.

Torben Hauskov, Havskov Svineproduktion

“We have tested the Pig-LET Starter and can only recommend everyone to use this solution to improve the survival of piglets.”

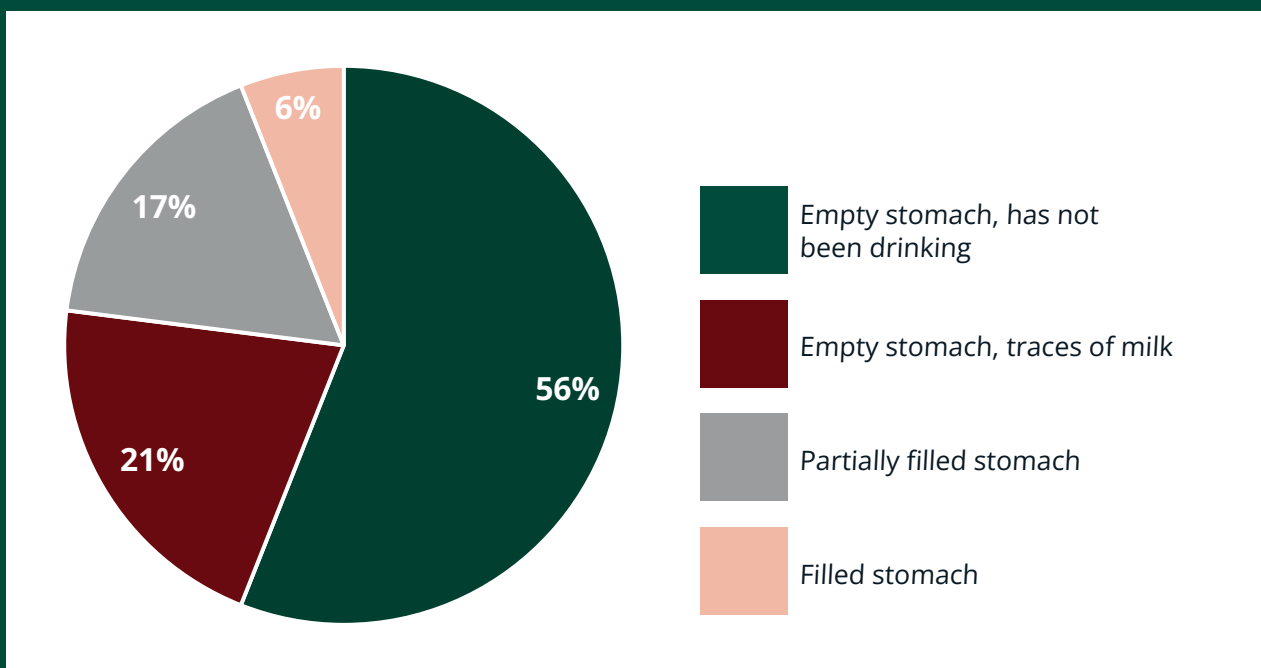
Søren Andersen is among the best pig producers in Denmark and has an annual production of over 43 piglets per year sow.



Søren Andersen, Sprøttrup Svineproduktion

77% of piglets who are squeezed to death has empty stomachs

SEGES have by autopsy investigated 308 piglets who were squeezed to death.



Source: SEGES Innovation

Hungry piglets seek out the sow more and are at increased danger

Results from SEGES Innovation show that a total of 77% of the slaughtered piglets had empty stomachs when they were squeezed to death. A hungry piglet will therefore constantly seek out the sow and has an increased risk of being crushed to death.

When a sow gets more than 16 live-born pigs, an extra supplement of fluid and nutrition is required. Pig-LET Starter helps the weakest piglets to get fluid and nourishment - and provides energy and power, so they seek out the sow less. Therefore, Pig-LET Starter reduces the number of piglets who are squeezed to death.

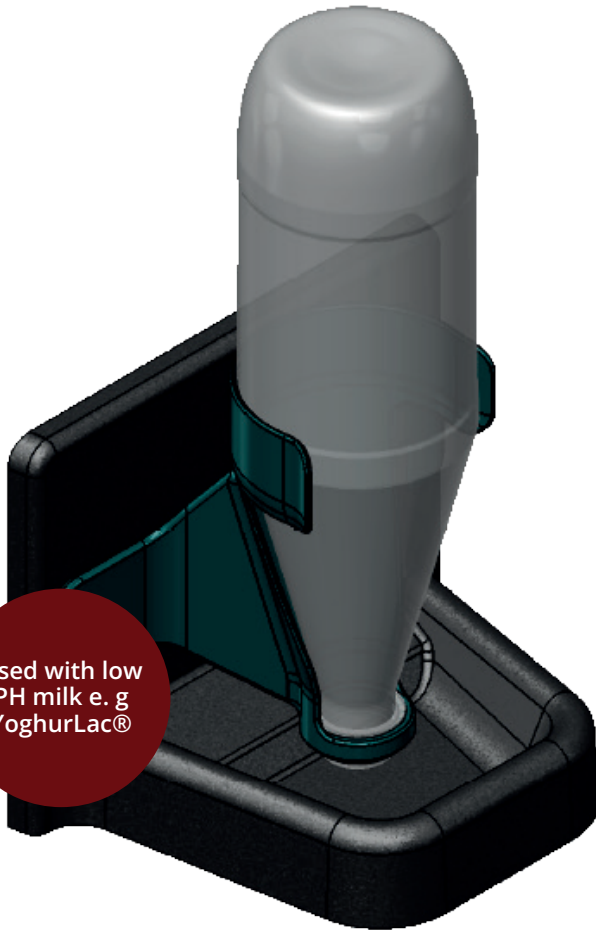
The new Pig-LET Starter



Best Farm's **Pig-LET Starter** has been tested by Danish pig producers with great results. Tests have shown that the Pig-LET Starter can save 40-50% of the weakest piglets. Along with the product, milk with a low PH is used, which keeps the milk fresh and appetizing for the pig.



- **Saves 40-50% of all mini pigs (weakest piglets under 800 g)**
- **Removable drinking solution for milk, used on day 0-3 and are placed in the covered creep area**
- **The weakest piglets get a supplement to the sow's milk.**



Pig-LET Starter

Comes with 1 pc. polymer bowl with cast-in thread for mounting, bottle holder and 2 pcs. thumbscrews.

Pig-Let Starter can be ordered individually, but is also included in our assembled products **Pig-LET 2-in-1** and **Pig-LET All-in-1**.

Pig-Let Starter is a removable unit and can therefore be easily moved around and placed in the areas where the piglets are. We recommend placing the Pig-LET Starter in the covered creep area (zone 2) for the first 2-3 days after birth. The weakest piglets can drink and get the necessary nourishment to survive. Afterwards the Pig-LET Starter can be moved outside the covered creep area. Pig-LET Starter can easily be placed in the covered creep area with a higher temperature. We recommend using dairy products with a low PH, e.g. YoghurLac®.

Tilbehør



Bottle holder with thread



Bottle, 1 L



Bottle lid



Transport box



Thumbscrew

Product

Pig-LET Starter 20x35x15 cm

Bottle holder with thread

Bottle, 1 L

Bottle lid

Transport box for 8 bottles

Finger screw for mounting the bottle holder



How to use the Pig-LET Starter

- It is recommended to start with Pig-LET Starter immediately after farrowing. Pig-LET Starter is placed in zone 2 (covered creep area) from day 0 to day 2 or 3 as needed.
- Then replace the Pig-LET Starter with Pig-LET 2-in-1 or Pig-LET All-in-1, which are placed in zone 3, so that all feed and drink are gathered in one place. And **ONLY** one place.

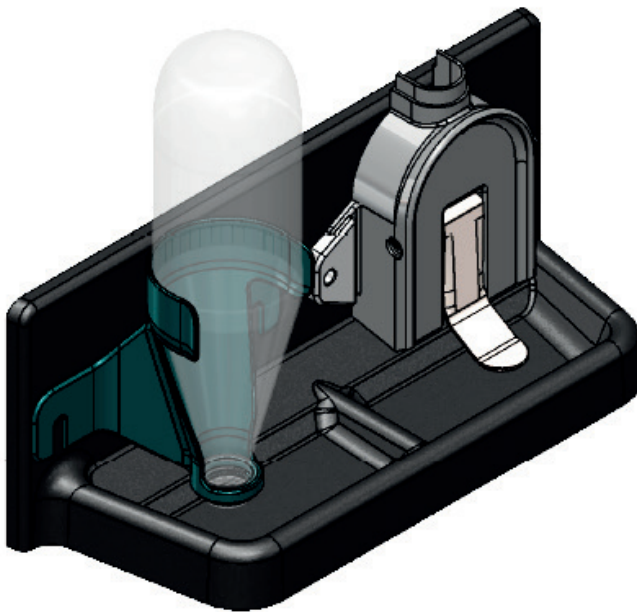
Pig-LET 2-in-1

Pig-LET Starter and MultiCup in one product

Comes with 1 pc. polymer trough with cast-in thread for mounting, a drinking cup and bottle holder.

Pig-LET 2-in-1 is a combination of Pig-LET Starter and Pig-LET MultiCup and is ideal for use a few days after farrowing. However, it is possible to combine Pig-LET 2-in-1 in several combination options. Can be assembled with 2 pcs. Pig-LET Starter, 2 pcs. Pig-LET MultiCup or one of each as shown in the picture.

Furthermore, the MultiCup can be connected to the Pig-LET Dropmix - see the section under dropmix in this catalogue.



Pig-LET 2-in-1 consists of Pig-LET Starter for the use of milk and Pig-LET MultiCup for the use of water and milk. In addition, both Pig-LET Starter and MultiCup can be used for Powerdrink (Electrolyte mixture etc.).

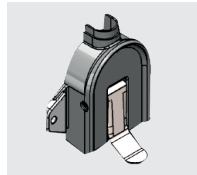
Accessories



Bottle holder with thread



Bottle, 1 L



Pig-LET MultiCup without saucer



Pig-LET drop-mix iron bar-holder



Pig-LET drop-mix bag

Product

Pig-LET 2-in-1

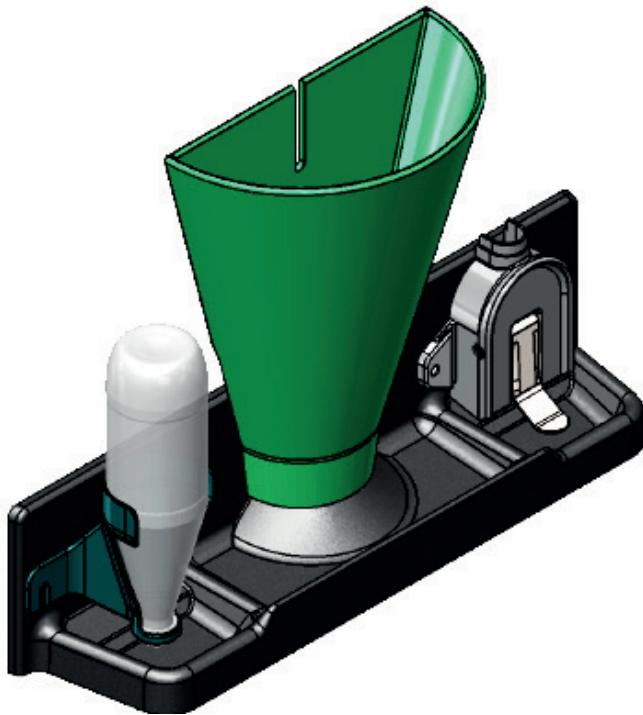
Bottle holder with thread

Bottle, 1 L

Pig-LET MultiCup without saucer

Pig-LET drop- mix iron bar-holder

Pig-LET dropmix bag



Pig-LET All-in-1

Pig-LET Starter, MultiCup and Dry Feeder in one product

Complete feeding station for piglets with four different options.

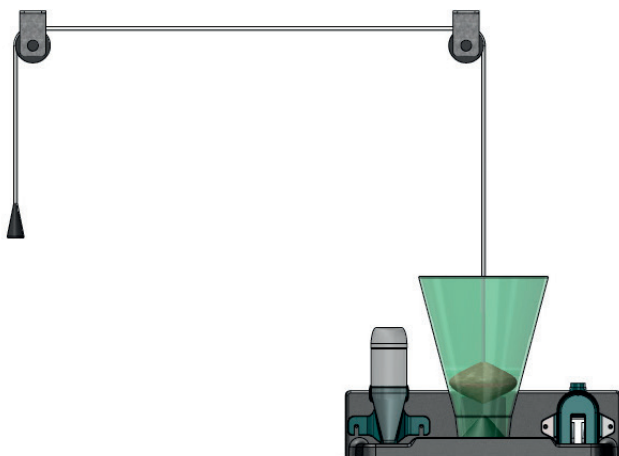
Delivered with 1 pc. polymer trough with cast-in thread for mounting the MultiCup and bottle holder. The trough can be adjusted with a slope for individual adaptation to floors with a slope.

Possibilities with the Pig-LET All-in-1:

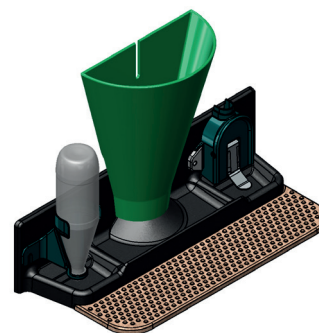
- **Milk** in the Pig-LET Starter
- **Dry food** in the Dry Feeder
- **Water or milk** in the Pig-LET MultiCup
- **Dropmix** mixture of e.g. iron or medicine from Pig-LET MultiCup

Pig-LET All-in-1 is a complete solution for piglets more than two days old. The solution is placed in zone 3, which the piglet is already exploring after day 2. The station contains among other Pig-LET Starter, which is familiar to the piglet from the first two days in the covered creep area and gives the pig milk from the start. The transition from Pig-LET Starter to Pig-LET All-in-1 is therefore simple and the piglet quickly learns that in the future it can find both liquid and feed here. Pig-LET All-in-1 has also implemented our Dry Feeder and the Pig-LET MultiCup, which can be connected to the dropmix with e.g., iron or medicine.

EasyFeed



Pig-LET All-in-1 is available with EasyFeed solution, which consists of a custom ball in the funnel, which is lifted and therefore a minimum amount of 10 g is dosed in the first 4-10 days. EasyFeed is easy feeding from the hallway, which also contributes to higher hygiene.



Pig-LET All-in-1 is available with polymer tile, mounted in front of the crib. The tile is acid-resistant and protects against corrosion.

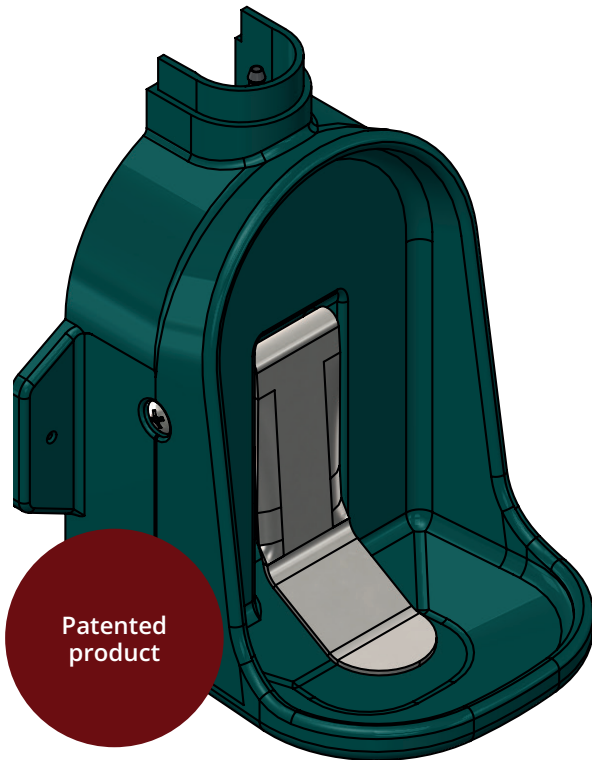
Piglets with power **Pig-LET MultiCup**



Pig-LET MultiCup is a drinking solution to piglets with several options. Pig-LET MultiCup is for both milk and water but can also be connected to the dropmix bag with a Powerdrink. The MultiCup is as a stand-alone product but is also included in Pig-LET 2-in-1 and the Pig-LET All-in-1.



- **Drinking cup with water guarantee. There is always water in the cup with Pig-LET MultiCup.**
- **The MultiCup can be connected to dropmix for dialyte or salt / sugar mixture.**
- **Tested at Danish pig producers with great results.**



Pig-LET MultiCup

Pig-LET Multi Cup has all the important functions needed to give the piglet a good start.

Pig-LET MultiCup is delivered with circulation, which is required when using milk. Circulation also helps to avoid old water. Pig-LET MultiCup has drip function and therefore the pigs get water quickly. The drip function contributes to quick learning. The Dropmix-function allows you to quickly connect the Powerdrink, which consists of:

- Iron
- Salt and sugar
- With more

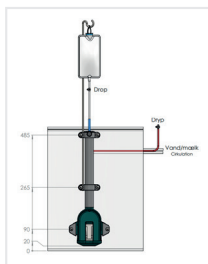
In addition, a drop mix can relate to medication, dialysis for diarrhea, etc.

- All details are well thought out for easy and good installation.
- Pig-LET MultiCup is delivered with two valves for resp. dropmix and water.
- Pig-LET MultiCup is easily lifted, and hoses can be replaced.
- Pig-LET MultiCup and the valves are a tested product.
- Pig-LET MultiCup is designed to be used for both the farrowing pen and the weaner unit.

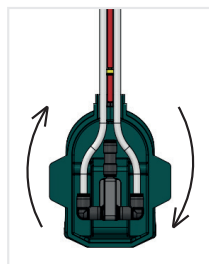
Pig-LET MultiCup comes with

- Plastic cup incl. valves
- Mounting bracket on the side of the cup, which slits up / down
- U-rail as a bracket of 35 cm for protection of hoses and top
- Top end
- 2 pcs. Brackets
- Screws and bolts are not included for mounting

Opportunities with Pig-LET MultiCup



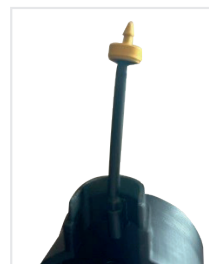
Connection of dropmix bag



Circulation of milk (and water)



The push plate can be lifted to a standing position for safe cleaning



Drip nozzle function (0,5 L per hour)



MultiCup without saucer used for 2-in-1 and All-in-1.

Accessories for Pig-LET MultiCup

Pig-LET MultiCup

Pig-LET MultiCup without saucer

Valve

Mounting bracket for slot on the side of the cup

U-rail

Topend

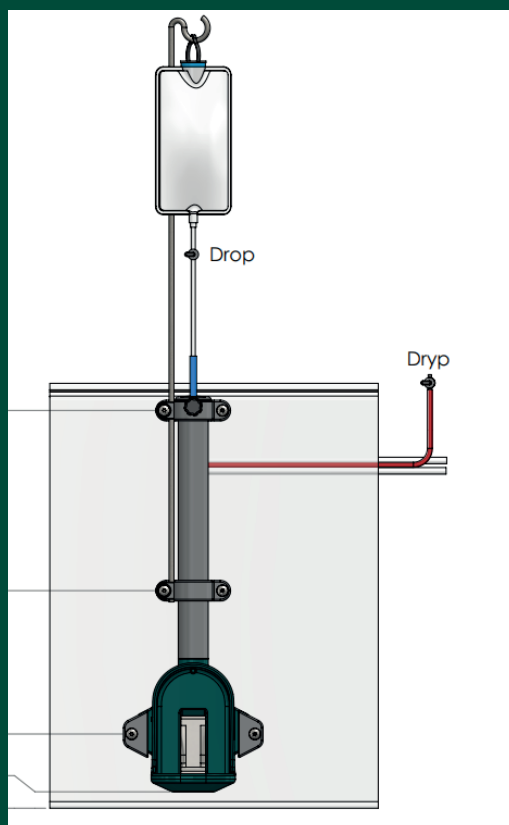
U-brackets

Drip nozzle with fittings (0,5 L per. hour)

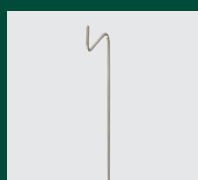
Furthermore, we have plastic fittings in Ø8 mm for mounting water and milk feed.

News

Combine Pig-LET MultiCup with dropmix



Pig-LET Dropmixbag 1,2 L with open/close function.



Ironbar

Dropmix is a new and easy way to allocate supplements for piglets at pen level. The dropmix bag is a closed unit and the content will therefore be appetizing for a longer period for the piglet.

The content of the Dropmix is dispensed into the cup as the piglet activates the push plate. A delicious mixture attracts the piglet to drink from the cup.

Product

Pig-LET Dropmixbag 1,2 L with open/close function.

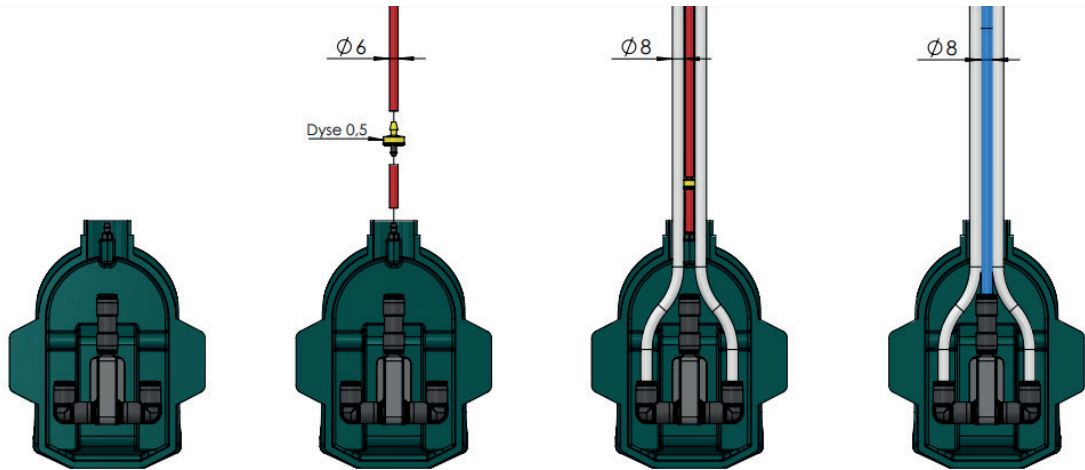
Ironbar

Mounting of Pig-LET MultiCup

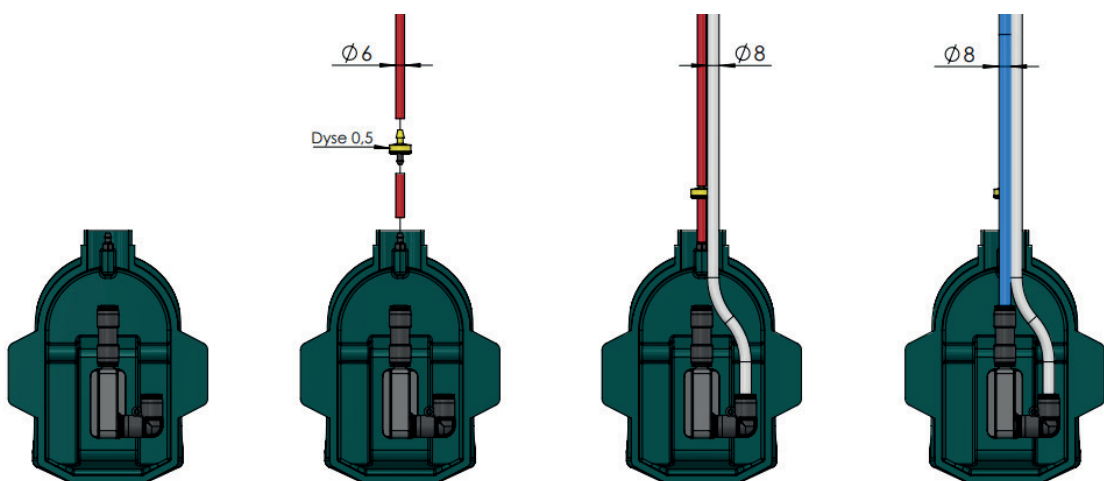
Fittings included for Pig-LET Multi-Cup incl. adapter from 6 to 8 mm hose.



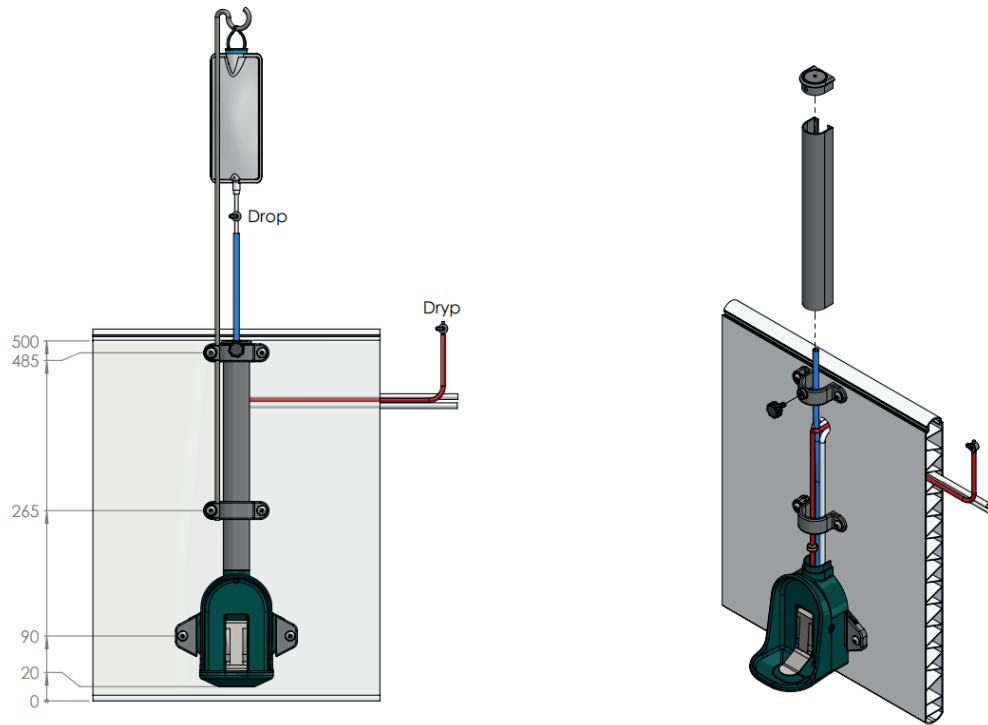
Mounting of Pig-LET MultiCup with circulation



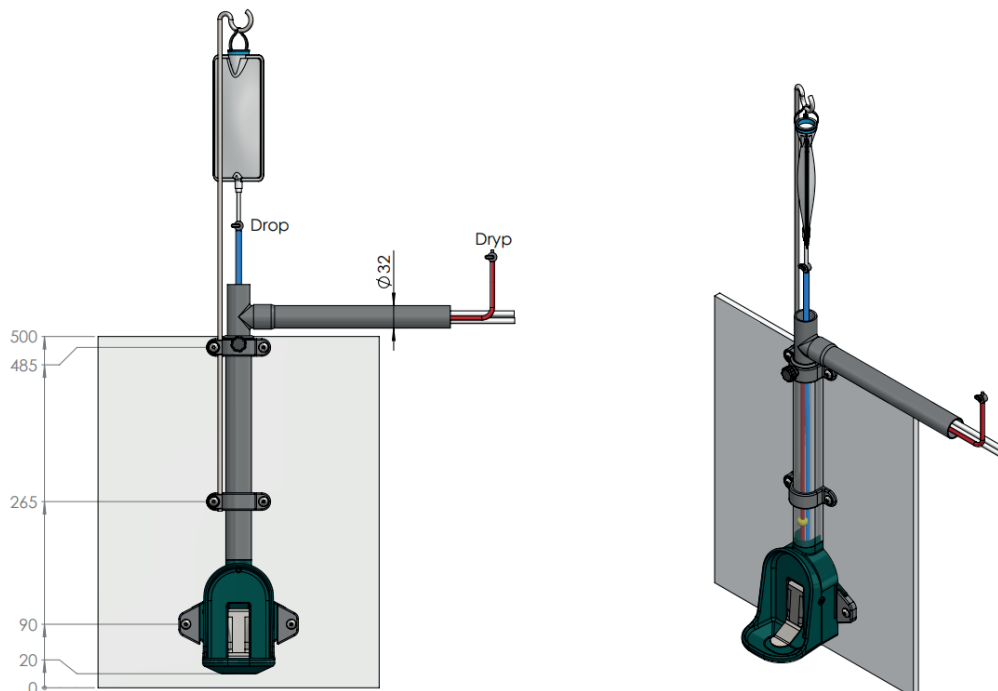
Mounting of Pig-LET MultiCup without circulation



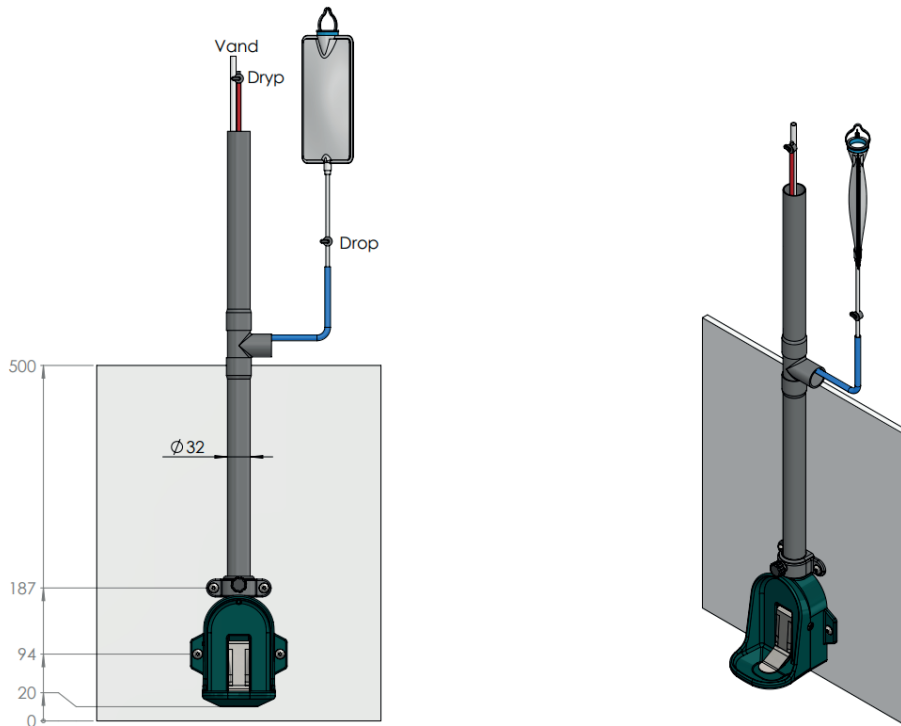
Mounting of Pig-LET MultiCup on 35 mm plank wall



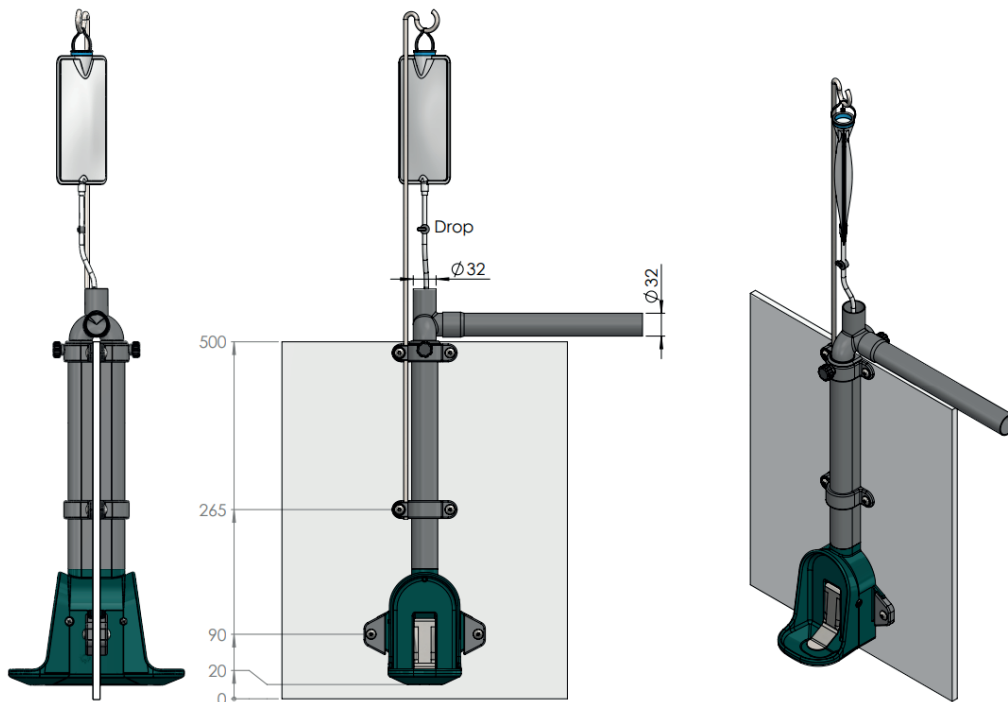
Mounting of Pig-LET MultiCup on 10 mm massive wall



Fixed mounting of Pig-LET MultiCup



Mounting of Pig-LET MultiCup on 10 mm massive wall - double mounting





SS Drinker with container

Without water connection

Stainless steel drinking cup with adjustable protective cover and 5 L container.

SS Drinker is delivered with mounting and adjustment brackets. With SS Drinker, easy learning is experienced, as the piglet gets water in the cup by activating the push plate.

The product has a low water pressure.

Accessory



SS Drinker without container

SS Drinker without container

With water connection

The product can also be obtained without a container when direct water connection is possible.

Product

SS Drinker with container, 5 L

SS Drinker without container

Round feeder

The Round feeder is delivered in transparent material, so the food content visible. The funnel is available with a closed lid and can be adjusted up and down in relation to the amount of feed.

Product

Roundfeeder



Feeders



Dry Feeder with funnel, 5 L

Dry Feeder is mounted in the farrowing pen and can be adjusted in height according to the amount of feed.

Mounting bracket included.



Dry Feeder, 0,9 L

Dry Feeder is available for fixed mounting on a wall or with mounting brackets, so the crib can be removed for cleaning.

Product

Dry Feeder with funnel, 5L

Dry Feeder, 0,9 L



Get the latest news



Visit us at bestfarm.dk and see the latest news when we regularly publish product news. Read more about us and our mission to reduce piglet mortality.



Follow us on social media



Flooring
Drinking cup
Dropmix
Piglet feeder
Clima control
Farrow management