



Best Farm
KONCEPT AND MANAGEMENT

- Expert in farrowing solutions
- Focus on piglets
- Focus on design and functionality



Aniheater®
Caves & curtains

Wi-Fi connection and overview
Alarm monitoring
Control of sow water level
Automatic climate control

Aniheater® is tested so you will get the best heat distribution and no maintenance.

Aniheater®

- Good cavity function.
- Good heat distribution.
- Provides higher productivity.
- Waterproof and strong.

**Simply
THE BEST!**

This is why you should choose the Aniheater®

100%
Maintenance
-free



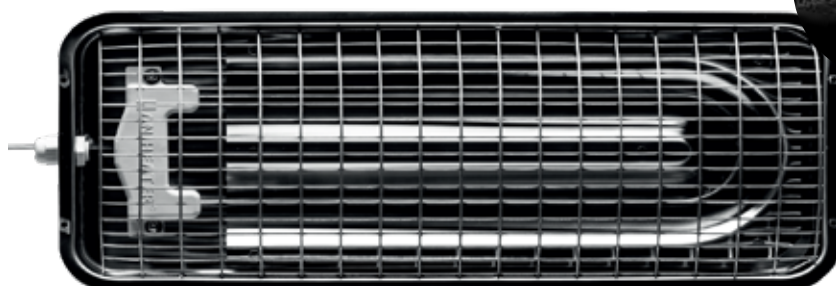
The Aniheater® will ensure optimal conditions for your piglets in the caves.



The Aniheater® comes in 3 variants and can be controlled both manually - and now also via Wi-Fi.

Benefits of using the Aniheater®

- **Reduces power consumption**
When combined with our controllers energy consumption can be reduced by up to 50%.
- **Better heat distribution**
It provides even more heat distribution than when using traditional heating lamps. This ensures higher survival rates among piglets - as well as a reduction in the medicine used.
- **Long lifespan**
The Aniheater® does not use incandescent bulbs like the traditional heating lamps.
- **No maintenance**
The Aniheater® is built for the barn and is also waterproof - IPX9K approved. It is easy to clean and can be cleaned with a high-pressure cleaner when the sections are washed also. This helps you to maintain a high level of hygiene.
- **Now it is also available with Wi-Fi**
It is also possible to connect the Aniheater® to Wi-Fi with specially developed controllers. In this way you can monitor the temperature in all your piglets' caves directly on your mobile/tablet/computer.

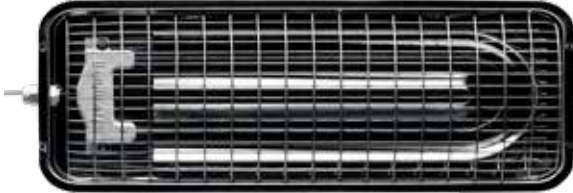


Products

The Aniheater® comes in 3 variants

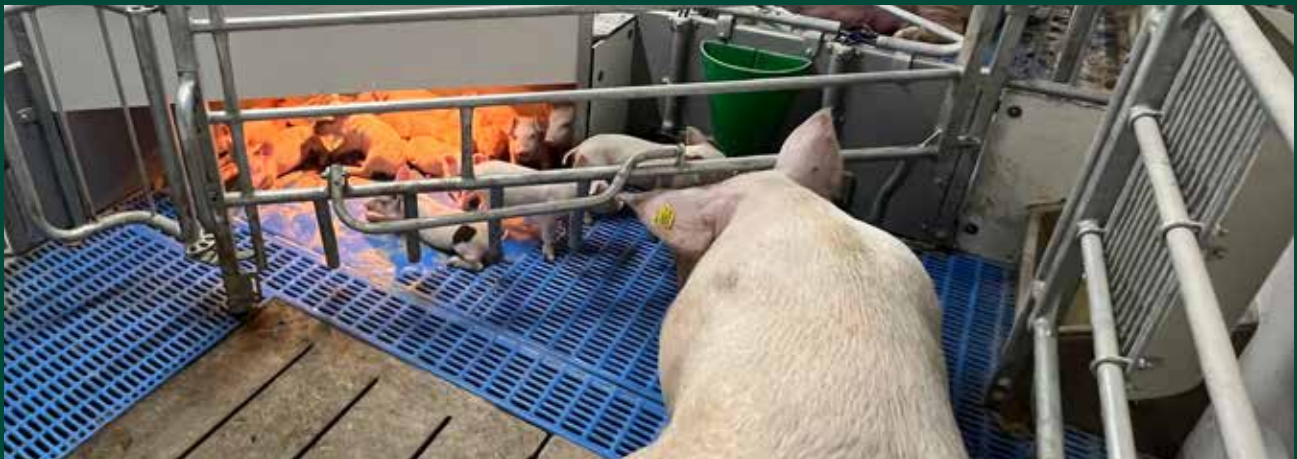
100 W / 150 W / 175 W

Incl. 2,4 m wire



SAVE up to 50% when combined with a controller

The controllers are available both as single and double controllers
- with og without Wi-Fi



Controllers - with og without Wi-Fi connection

Our controllers are available in several different variants:

- Both as single and double controllers.
- With or without indicators.

The latest development is controllers that can be connected to Wi-Fi.

- You will have the opportunity to control and monitor everything directly on your mobile/tablet.
- You will be able to see the temperature in all your piglet caves and can ensure correct heating.
- You can control and ensure that your sow gets enough water around the clock.
- You will receive an immediate alert if something is not working correctly.



Aniheater
Double control



Aniheater
A16 single control



Aniheater Digital Control
- Advance/Cloud



Aniheater Digital Control
- Advance/Cloud-display+Water

Examples of controllers
Find all your options futher ahead...

The difference

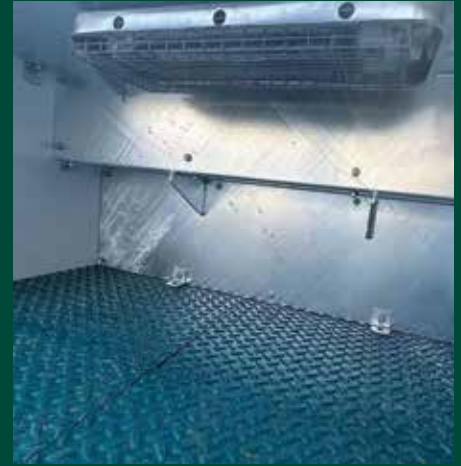
between a traditional heating lamp and the Aniheater®



Radiant heat / heating lamp



Aniheater®

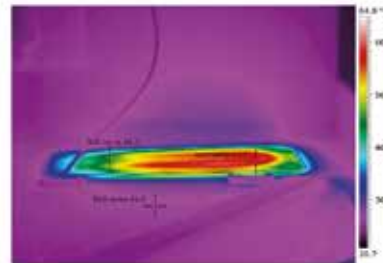


Aniheater®

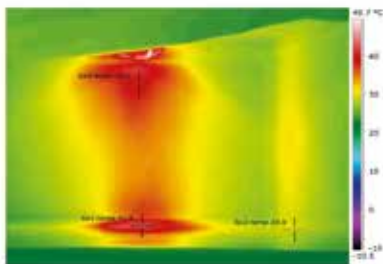
Thermographic difference between a traditional heating lamp and the Aniheater®



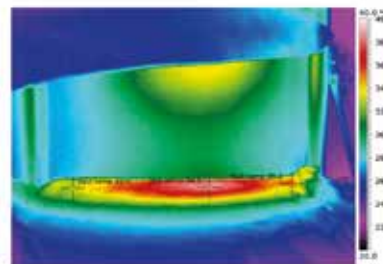
162 °C Above the light bulb
72,0 °C Center of the lamp
23,6 °C Left side of the lamp



58,5 °C Above the heating element
46,2 °C Left side above the Aniheater®
23,6 °C Next to the Aniheater®, in front of



41,8 °C Below the lamp - at the floor
28,8 °C The right side of the lamp
39,3 °C Below the lamp/the lid



38,5 °C Below the Aniheater® - at the floor, center
28,8 °C Below the Aniheater® - at the floor, right side
39,3 °C Below the Aniheater® - at the floor, left side

Aniheater® Digital Control

- welfare and economy in the farrowing pen



- The system is built to **optimize your operation and reduce your energy consumption.**
- One unit that controls the farrowing pen with that one aim - **to increase animal welfare, reduce mortality and secure the well-being and growth of your piglets.**
- The solution ensures a **reduced energy consumption**, which has shown in tests - to give a **reduction of 40-60%** compared to a traditional farrowing pen.
- The solution will **monitor your temperature conditions in the piglet caves** and provide you with an alarm with a flashing light in the control box, e.g. if the heater is defect or the lid at the cave is open.
- A controller is designed to control 2 farrowing pens. The controller is **connected to a temperature sensor and the Aniheater® in each piglet cave.**
- Each control box is an independent unit that **controls the temperature and monitors your piglet caves individually.**
- When installing a controller with built-in water measurement, you can **monitor how much the sow is drinking** as well as her behavior, e.g. reduced drinking before she gives birth.



Images with alarm control monitoring

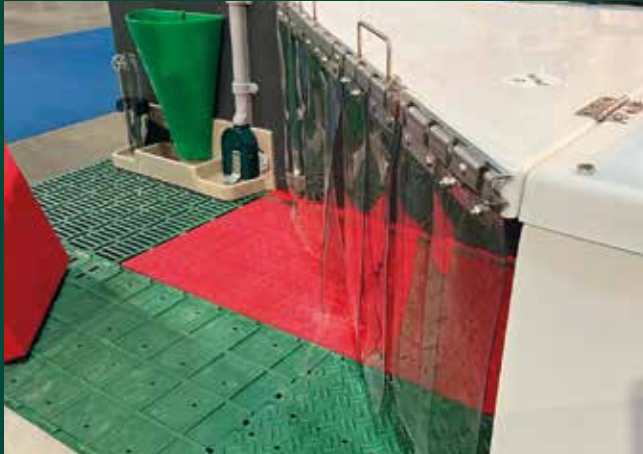
Simple solution



The caves ensure optimal conditions

- better survival and lower mortality

The cave ensures a controlled microclimate, not just heat!



- Newborn piglets instinctively seek cover, graze and being able to lie close together in a group - **our caves creates these optimal conditions for the piglets.**
- **Our caves ensure that your piglets can stay warm,** and due to this fact - your temperature conflict is resolved.
- The caves help reduce stress caused by cold and at the same time increase the lying as well as the rest time for the piglets. In addition, the **risk of accidents where the sow lies down on the piglets is also reduced,** as your piglets are lying in the cave instead of close to the sow.
- Your piglets will have **higher growth rates, and you will get better feed utilization,** as the piglet uses less energy for keeping warm and more energy for growing, which gives you more similar piglets.
- There will be **less medical treatment,** as cold causes stress which ultimately weakens your piglets immune system, which can also end up causing diarrhea and respiratory problems.
- You will achieve **better hygiene in the pens and easier cleaning** due to the fact that the piglets naturally separate the lying area and the manure area from each other.
- By installing an Aniheater® in our caves **you will achieve both economic as well as climate benefits.** Local heating requires significantly less energy and as a result - a lower energy consumption.

This is why caves are more efficient than just heating lamps.

When using only heating lamp	Cave with an Aniheater®
Heat disappears upwards	Heat is kept in the cave
Cold affects the piglets	No cold zones
Uneven temperature	Stable microclimate
More energy consumption	Lower energy consumption

A cave is more efficient when:

1. It is covered up.
2. It is without cold areas/zones.
3. It has the correct temperature.
4. It is attractive (dry, clean, correct size).
5. It is correctly installed in relation to sow and pen behaviour.

At Best Farm, we have many solutions customized to your needs!

Do you have questions?



Sales:

CEO

Lars Brunse

+45 44 18 22 44

lbr@bestfarm.dk

www.bestfarm.dk



Homepage

Office:

Connie Nielsen

+45 25 44 18 44

cn@bestfarm.dk

Jeanette Hindsgavl

+45 25 10 43 44

jmh@bestfarm.dk

Terms and conditions

We reserve the right to any printing errors, price changes and tax changes.

Prices are ex works.

All prices are exclusive both the packaging and shipping costs.



Flooring
Drinking cups
Dropmix
Pig-LET Feeder
Clima control
Farrow Management